

MULTISCREENER ASSEMBLY INSTRUCTIONS

Assembly videos available at
soilscreener.com



BETTER BUILT CORPORATION
info@betterbuiltcorporation.com
Text support at 978-294-9892

Table of Contents

Leg Installation _____	1
Wheel Installation _____	1
Motor/Pulley Installation _____	2
Belt Installation _____	2
Belt Guard Installation _____	2
Fold-down handle installation _____	2
Debris slide installation _____	2
Parts Diagrams _____	3, 4
Parts List _____	4
Operation _____	5

**Find additional information and
videos at soilscreener.com**

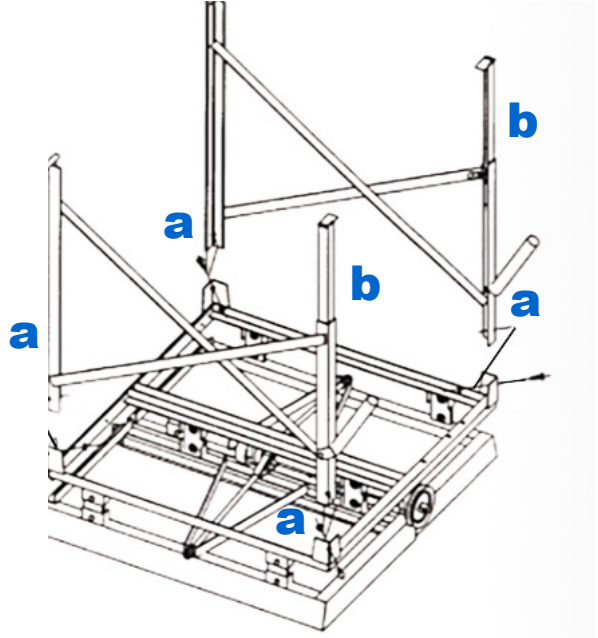
1. Out of the Box

Remove Legs, guards and hardware from carton.

2. Legs

Insert (a) legs into frame and secure legs with 5/16" bolts, washers and nuts.

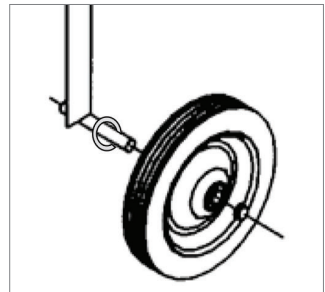
Insert (b) feet into legs as shown and secure with 3/8" bolts.



Note that the side where pulley is installed is the rear of machine. Axles for wheels are installed to the front of machine

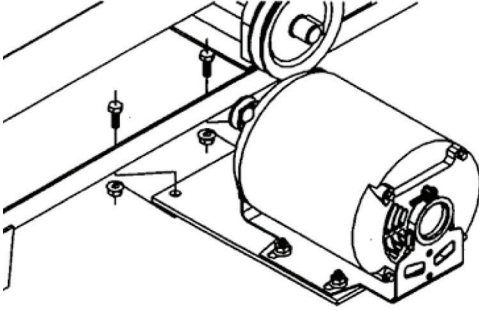
3. Wheels

Install large flatwashers and wheels. Secure with push nuts using a rubber mallet.



4. Motor/Pulleys

- A. Attach motor plate to frame with 5/16" bolts & nuts. Tighten securely.
- B. Place motor on plate with shaft towards machine.
- C. Install small flat-washers, 5/16" bolts and nuts but do NOT tighten.
- D. Align pulleys and install belt .
- E. Tighten belt by sliding motor sideways on mounting plate while tightening 5/16 bolts and nuts, then tighten set screws on pulleys.

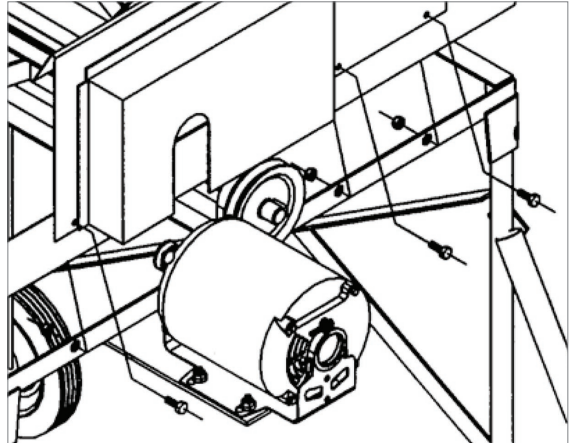


7. Handles

Attach fold-down handles and secure with 5/16" bolts & nuts

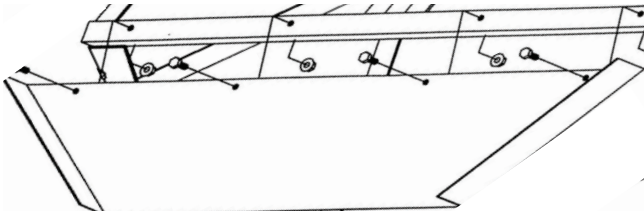
5. Belt Guard

Slide belt guard over pulleys.
Secure with 1/4" bolts and nuts.

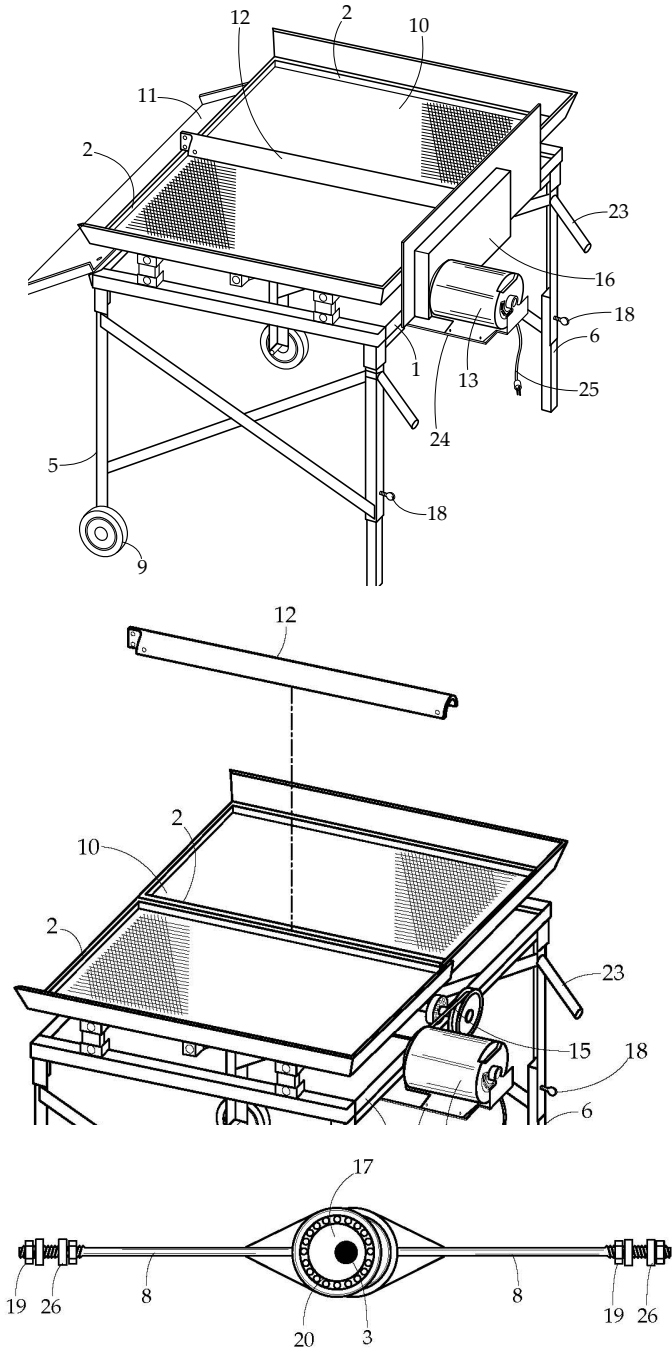


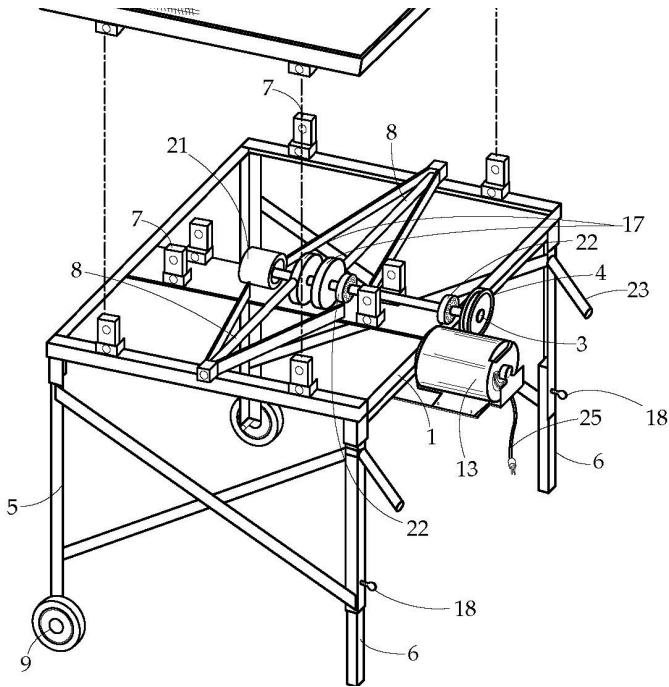
6. Debris Slide

Install debris slide onto front angle and secure with 1/4" bolts and nuts.

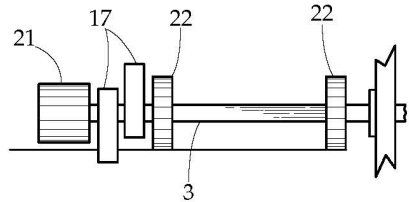


PARTS LIST & DIAGRAMS





1. MAIN FRAME
2. SCREEN FRAME (2)
3. DRIVE SHAFT
4. DRIVE PULLEY (V BELT)
5. SUPPORT LEG FRAMES (2)
6. HEIGHT ADJUSTING LEGS (2)
7. FLEXIBLE SCREEN-FRAME SUPPORTS (2)
8. CONNECTING RODS (2)
9. TRANSPORT WHEELS (2)
10. SCREENS (2)
11. DEBRIS CHUTE
12. FLEXIBLE DIRT SHIELD (RUBBER)
13. MOTOR (ELECTRIC POWERED)
14. MOTOR PULLEY
15. DRIVE BELT
16. BELT COVER GUARD
17. CRANK SHAFT CAMS
18. REAR LEG LOCKING BOLTS (2)
19. SELF-LOCKING NUTS (2)
20. CONNECTING ROD BEARINGS
21. DRIVE SHAFT FLYWHEEL
22. DRIVE SHAFT BALL BEARINGS (2)
23. FOLDABLE HANDLES (2)
24. MOTOR BASE PLATE
25. ELECTRIC POWER CORD



Hardware Shipped with Machine:

- 7 1/4 - 20 x 1/2" bolts, 7 1/4" washers
- 12 5/16 x 1" bolts, 8 5/16" washers
- 2 3/8" x 1 1/2" bolts, 2 3/8" washers
- 7 1/4-20 Nylock nuts
- 12 5/16 Nylock nuts
- 4 5/16 Washers - Motor

Hardware Shipped with Motor:

- 2 Push nuts for wheel retention
- 4 Washers for axles/wheels
- 1 19" Belt
- 1 2" Pulley

MultiScreener Operation

Stand the machine on level ground. If there is wind or a breeze it is best to operate with the wind coming from the motor side of the machine. In extremely dusty applications the debris can cause motor failure.

To start the machine plug the motor power cord into an electric outlet using an extension cord. See motor owner's manual for cord size/length recommendations for best performance.

To adjust the material flow rate raise or lower adjustable leg until desired rate is obtained. The steeper the incline, the faster the material will flow across the screens.

DO NOT OPERATE MACHINE IN WET CONDITIONS

After use, brush screens clean and coat with a metal protectant.

Store machine in a dry place.